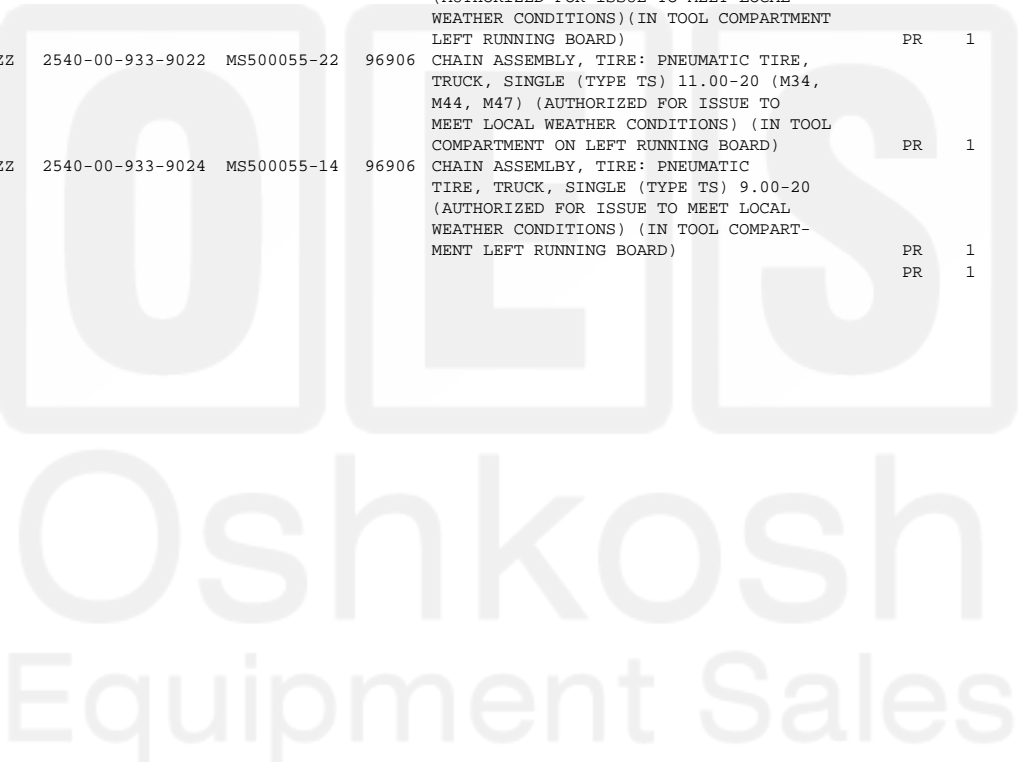


Current part is item (8) on diagram. Available at www.oshkoshequipment.com

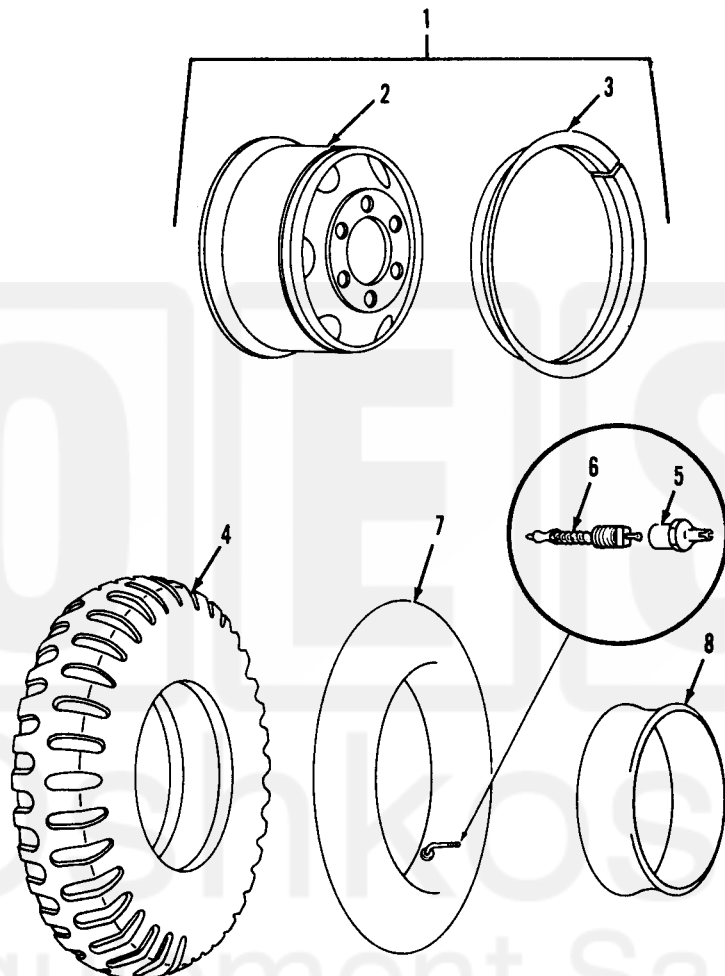
(1) FIG. NO.	(2) (a) ITEM NO.	(3) SMR CODE	(4) NATIONAL STOCK NUMBER	(5) PART NUMBER	(6) FSCM	(7) DESCRIPTION	(8) U/M	(9) INC IN UNIT
-----------------	---------------------	-----------------	------------------------------	--------------------	-------------	--------------------	------------	--------------------

1313-TIRES

133	4	PAOOF	2610-00-262-8653	MS35388-21	96906	TIRE, PNEUMATIC: TRUCK AND BUS, 12-PLY, 11.00-20 (M34, M44, M47, V17A/MTQ, V18A/MTQ)	EA	6
133	4	PAOOF	2610-00-262-8677	MS35388-16	96906	TIRE, PNEUMATIC: TRUCK AND BUS, 8-PLY, 9.00 X 20	EA	10
133	5	PAOZZ	2640-00-060-3550	MS51375-1	96906	CAP, TIRE VALVE	EA	10
133	6	PAOZZ	2640-00-810-5861	MS51377-1	96906	VALVE CORE, PNEUMATIC TIRE	EA	10
133	7	PAOOZ	2610-00-269-7383	MS35392-13	96906	INNER TUBE, PNEUMATIC TIRE: TRUCK AND BUS 9.00-20	EA	10
133	7	PAOZZ	2610-00-051-9450	MS35392-15	96906	INNER TUBE, PNEUMATIC TIRE: TRUCK AND BUS, 11.00-20 (M34, M44, M47, V17A/MTQ, V18A/MTQ)	EA	6
133	8	PAOZZ	2640-00-158-5617	11662389-2	19207	FLAP, INNER TUBE (USED W/ TUBE 2610-00-051-9450)	EA	6
133	8	PAOZZ	2640-00-147-5160	20N	73842	FLAP: INNER TUBE (USED W/ TUBE 2610-00-269-7383)	EA	10
134	1	PAOZZ	2640-00-200-1934	8333276	19207	EXTENSION: TIRE VALVE	EA	10
134	2	PAOZZ	2640-00-408-4800	10883229	19207	BRACKET: VALVE EXTENSION	EA	4
134	3	PAOZZ	5310-00-482-1025	10883232	19207	NUT: VALVE EXTENSION BRACKET	EA	4
134	NI	PAOZZ	2540-00-933-9030	MS500054-6	96906	CHAIN ASSEMBLY, TIRE: PNEUMATIC TIRE, TRUCK DUAL (TYPE TD) 9.00-20 (AUTHORIZED FOR ISSUE TO MEET LOCAL WEATHER CONDITIONS) (IN TOOL COMPARTMENT LEFT RUNNING BOARD)	PR	1
134	NI	PAOZZ	2540-00-933-9022	MS500055-22	96906	CHAIN ASSEMBLY, TIRE: PNEUMATIC TIRE, TRUCK, SINGLE (TYPE TS) 11.00-20 (M34, M44, M47) (AUTHORIZED FOR ISSUE TO MEET LOCAL WEATHER CONDITIONS) (IN TOOL COMPARTMENT ON LEFT RUNNING BOARD)	PR	1
134	NI	PAOZZ	2540-00-933-9024	MS500055-14	96906	CHAIN ASSEMBLY, TIRE: PNEUMATIC TIRE, TRUCK, SINGLE (TYPE TS) 9.00-20 (AUTHORIZED FOR ISSUE TO MEET LOCAL WEATHER CONDITIONS) (IN TOOL COMPARTMENT LEFT RUNNING BOARD)	PR	1
							PR	1



Current part is item (8) on diagram. Available at www.oshkoshequipment.com



TA 031205

Figure 133. Wheel, rim, tire, tube, liner, valve and cap.